

USED UNIFORM INFORMATION

To Consign your items and earn
70% off the profit

ITEMS NO LONGER ACCEPTED:

- Spirit Shirts
- Socks
- Non-Classroom approved Crusader Wear
- Activity Shirts or uniforms including (but not limited to): Band, cheer, scouts, soccer, etc.

GUIDELINES FOR CONSIGNING:

- Items must be in **GOOD CONDITION**: no holes, stains or discoloration. If the item is not in good condition we will not sell it.
- Items should be **CLEAN & FOLDED**
- If an item has been altered (hemmed or let -out), please make a note on the tag.
- We can only accept Dennis or LaRose uniforms, and they **MUST** have a logo on the outside of the garment (pants and shorts only). This is a tag, a button or a small red "L" on the shorts or pants
- **PLEASE ONLY ATTACH YOUR TAGS WITH SAFETY PINS**– NO STAPLES OR STRAIGHT PINS. This protects the garment and our fingers. If you need safety pins please just ask we are happy to share

Drop off: Thursday, Oct 18
7:30am-12:00pm
Sale date: Friday, Oct 19
7:30am-4:00pm

READY TO CONSIGN:

- Complete the Inventory Sheet below with item numbers, description, size and price.
- Attach a tag with a **SAFETY PIN** to the top right side of each garment. Please use the tag template below
- Drop off your items and **CHECK IN**. Items must be dropped off at Parish Hall Oct 18th between 7:30 and Noon. **CARLINE IS FOR DONATIONS ONLY**. If you consign you must come in and check in your items.
- If you have unsold items that you want returned, please pick them up at the school office before Monday October 22 at Noon. After this time, all remaining items will be donated to the PTO

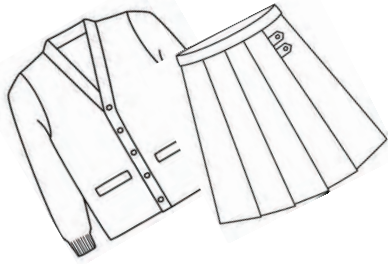
**Have ?'s or
Want to Volunteer
Please contact
Jessica Workman
jmhworkman@yahoo.com**

NEW LOCATON PARISH HALL

JUST WANT TO DONATE Here's How:

Donate your items to the PTO. For your convenience, volunteers will be accepting your items during morning carline on Thurs Oct 18. Or, you may drop off your items directly in the Parish Hall.
NO TAGS, NO INVENTORY, NO WORK!!

Forms can also be located @
<http://stjohnb.com/pto/ptoforms/useduniformforms.pdf>.



ST. JOHN'S USED UNIFORM SALE



Sale dates:
Friday, October 19th
7:30am-4:00pm

New Location
Parish Hall

Would you like to Volunteer?

Work a shift during BOTH set-up and sale, and you can shop early at the workers' sale on Thursday, October 18th, 1:00pm to 3:00pm (Set-up day is Thursday, October 18th, starting at 7:30am, sign up for a shift)

For more information or to volunteer,
contact the
Used Uniform Sale chair:
Jessica Workman at (808)232-3973
Jessica.workman@pyramidins.com

Thank you for shopping with us!

Tag Template

<p>Item # 1</p> <p>NAME: Family's Last Name</p> <p>Item Description: Boys Navy Shorts</p> <p>Size: 10.</p> <p>Price \$ PTO Pricing OR you may price</p>	<p>Item #</p> <p>NAME:</p> <p>Item Description:</p> <p>Size:</p> <p>Price \$</p>
<p>Item #</p> <p>NAME:</p> <p>Item Description:</p> <p>Size:</p> <p>Price \$</p>	<p>Item #</p> <p>NAME:</p> <p>Item Description:</p> <p>Size:</p> <p>Price \$</p>
<p>Item #</p> <p>NAME:</p> <p>Item Description:</p> <p>Size:</p> <p>Price \$</p>	<p>Item #</p> <p>NAME:</p> <p>Item Description:</p> <p>Size:</p> <p>Price \$</p>
<p>Item #</p> <p>NAME:</p> <p>Item Description:</p> <p>Size:</p> <p>Price \$</p>	<p>Item #</p> <p>NAME:</p> <p>Item Description:</p> <p>Size:</p> <p>Price \$</p>

Name: _____

**** Please Check One of the Following regarding Unsold Items ****

___ I would like to donate unsold items to PTO

___ I would like to keep my unsold items and will pick them up by Monday, October 22nd.

(unsold items will be ready for pickup by Noon on Monday, October 22nd.

****Items MUST be picked by Monday, October 22nd****

Unclaimed items will be donated to PTO!

Checks will be sent home to the address below.

Family Name, Grade and Class:

Check should be made & mailed to:

Name

Address

Please carefully complete the inventory sheet. This will be used to track your sales and calculate payment.

Total sold = _____

Total Check amount = _____

INVENTORY SHEET

Check in	Item #	Description	Size	Price	SOLD	Recovered Returned	Comments
	1						
	2						
	3						
	4						
	5						
	6						
	7						
	8						
	9						
	10						
	11						
	12						
	13						
	14						
	15						
	16						
	17						
	18						
	19						
	20						
	21						
	22						
	23						
	24						
	25						
	26						
	27						
	28						
	29						
	30						
	31						
	32						
	33						
	34						
	35						
	36						
	37						
	38						
	39						
	40						
	41						
	42						
	43						
	44						
	45						